

State of Wyoming Corner Record

(In compliance with the **CORNER PERPETUATION AND FILING ACT**, Wyoming Statutes, 1997 Section 33-29-140 et. seq., and the Rules and Regulations of the Board of Professional Engineers and Professional Land Surveyors)

Reverse side of this form may be used if more space is needed.

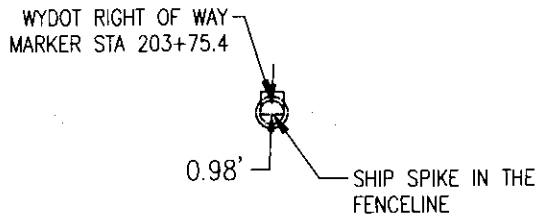
Record of original survey and citation of source of historical information (if corner is lost or obliterated). Description of corner monumentation evidence found and/or monument and accessories established to perpetuate the location of this corner. Sketch of relative location of monument, accessories, and reference points with course and distance to adjacent corner(s) (if determined in this survey). Method and rationale for reestablishment of lost or obliterated corner.

FOUND: FOUND WYDOT RIGHT OF WAY MARKER MARKED
203+75.4

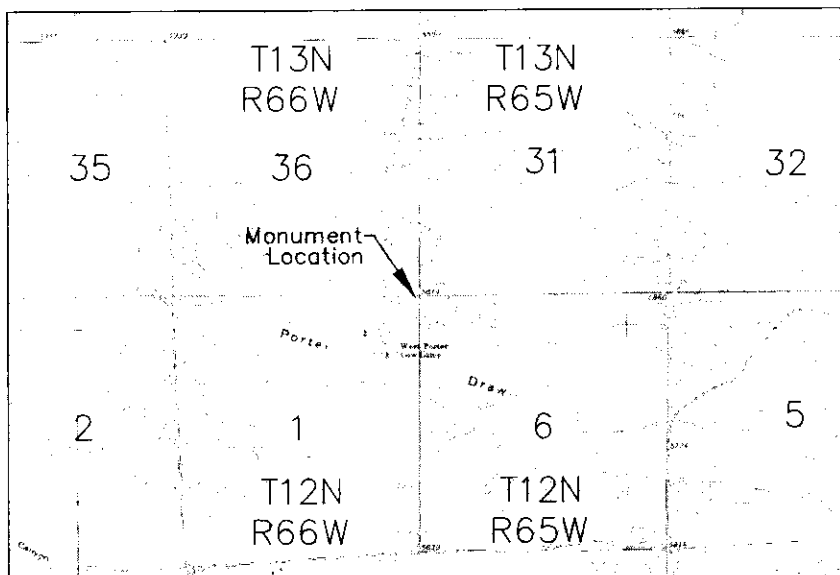
SET: NOTHING

HISTORY: THE ORIGINAL SURVEY OF THE TOWNSHIP LINES WAS PERFORMED IN 1867 BY WILLIAM ASHLEY. SHIP SPIKE SET BY LARAMIE COUNTY SURVEYOR AS REFERENCE TO CLOSING CORNER AT THE TOWNSHIP LINE FOR THE LINE BETWEEN SEC. 6, T12N, R65W, AND SEC. 1, T12N, R66W PER MONUMENT RECORD BY LS 3047, RECP. NO. 192843 OF THE LARAMIE COUNTY CLERK'S RECORD. THE PLATS AND ORIGINAL FIELD NOTES WERE OBTAINED FROM THE BLM.

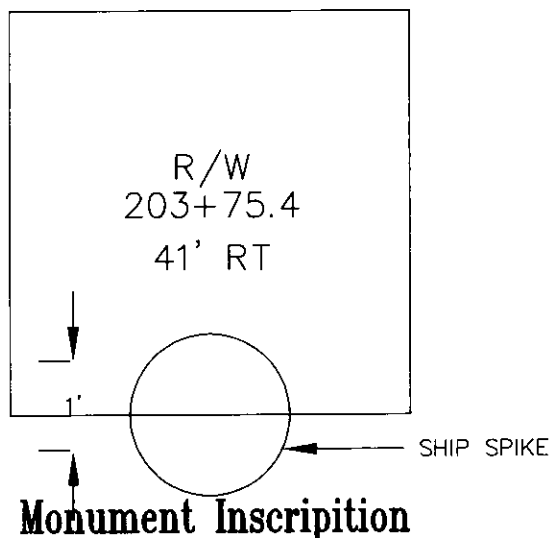
TIES: SEE MAP OF SURVEY RECORDED 10/9/2007
BOOK 2028, PAGE 1823, RECORD NO. 485384



Location Sketch
1" = 20'



Monument location



Monument Inscription

Date of Field Work: 7/11/07

Office Reference: 2730

Cross Index Plat

	1	2	3	4	5	6	7	8	9	10	11	12	13	14	15	16	17	18	19	20	21	22	23	24	25	
A	●	+	+	+	+	+	+	+	+	+	+	+	+	+	+	+	+	+	+	+	+	+	+	+	+	A
B		+	+	+	+	+	+	+	+	+	+	+	+	+	+	+	+	+	+	+	+	+	+	+	+	B
C		6	5	4	3	2	1																			C
D		+	+	+	+	+	+	+	+	+	+	+	+	+	+	+	+	+	+	+	+	+	+	+	+	D
E																										E
F		+	+	+	+	+	+	+	+	+	+	+	+	+	+	+	+	+	+	+	+	+	+	+	+	F
G		7	8	9	10	11	12																			G
H		+	+	+	+	+	+	+	+	+	+	+	+	+	+	+	+	+	+	+	+	+	+	+	+	H
J																										J
K		+	+	+	+	+	+	+	+	+	+	+	+	+	+	+	+	+	+	+	+	+	+	+	+	K
L		18	17	16	15	14	13																			L
M		+	+	+	+	+	+	+	+	+	+	+	+	+	+	+	+	+	+	+	+	+	+	+	+	M
N																										N
O		+	+	+	+	+	+	+	+	+	+	+	+	+	+	+	+	+	+	+	+	+	+	+	+	O
P		19	20	21	22	23	24																			P
Q		+	+	+	+	+	+	+	+	+	+	+	+	+	+	+	+	+	+	+	+	+	+	+	+	Q
R																										R
S		+	+	+	+	+	+	+	+	+	+	+	+	+	+	+	+	+	+	+	+	+	+	+	+	S
T		30	29	28	27	26	25																			T
U		+	+	+	+	+	+	+	+	+	+	+	+	+	+	+	+	+	+	+	+	+	+	+	+	U
V																										V
W		+	+	+	+	+	+	+	+	+	+	+	+	+	+	+	+	+	+	+	+	+	+	+	+	W
X		31	32	33	34	35	36																			X
Y		+	+	+	+	+	+	+	+	+	+	+	+	+	+	+	+	+	+	+	+	+	+	+	+	Y
Z																										Z

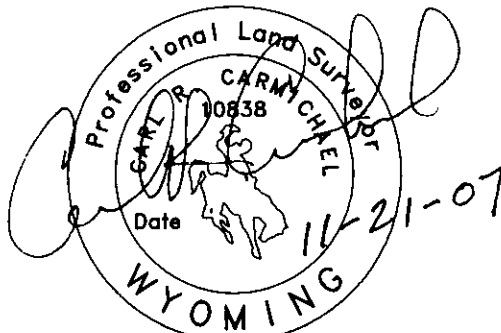
Firm/Agency, Address

AVI P.C.
2035 WESTLAND RD.
CHEYENNE, WY. 82001

Telephone Number: 307-637-6017

This corner record was prepared by me or under my direction and supervision.

SEAL & SIGNATURE



RECORDED 11/21/2007 AT 10:34 AM REC# 488227 JK# 2034 PG# 1037
DEBRA K. LATHROP, CLERK OF LARAMIE COUNTY, WY PAGE 1 OF 1

Corner Name R/W MARKER Section Reference to closing corner on Township line between Sec. 6, T12N, R65W, and Sec. 1, T12N, R66W, 6th P.M. County: Laramie Wyoming
SBRPEPLS/PLSW: March 1994; PLSW January 1998

Cross-Index No.: A-1